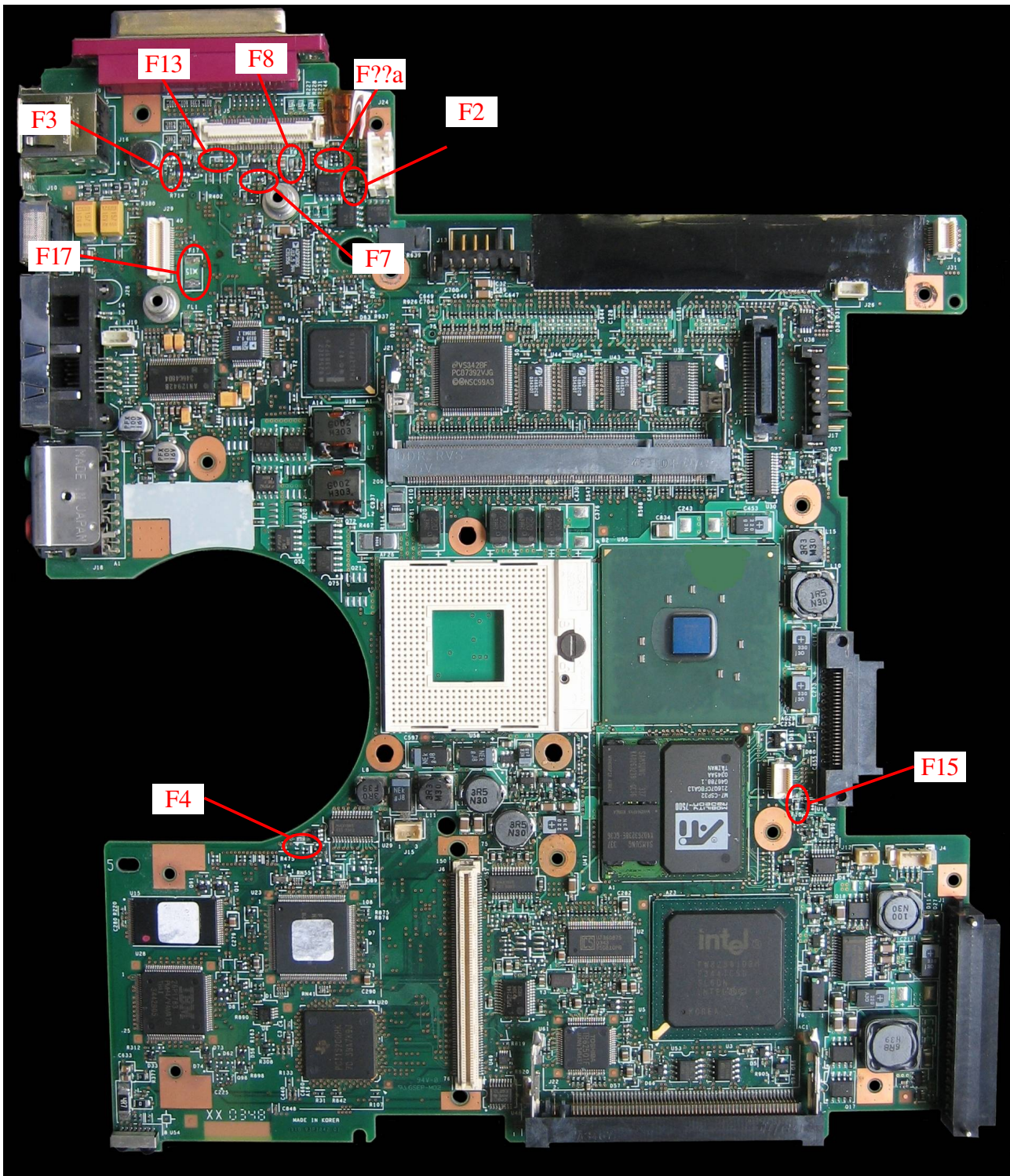


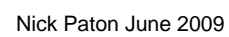
Thinkpad T4x Board Fuses

Ver3 15 Mar 09

The board pictures represent a generic T4x series board; therefore some fuses shown will not be fitted to some boards, or may be in slightly different positions.

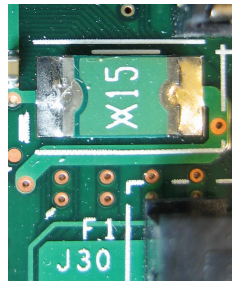


Nick Paton June 2009

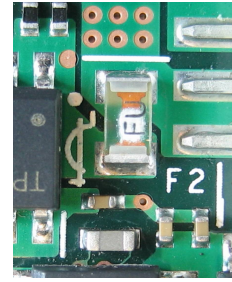


Thinkpad T4x Fuse Locations:

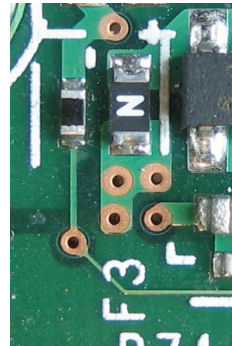
F1
xx mA
Marked 'X15'



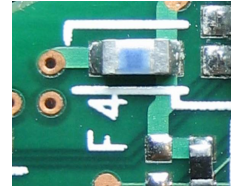
F2
7A
Marked 'FU'



F3
2A / 3A
Marked 'N'
Also 'P'



F4
500mA
Marked 'F'



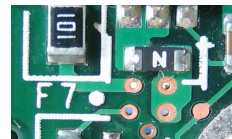
F5
xx mA
Marked

Location Unknown

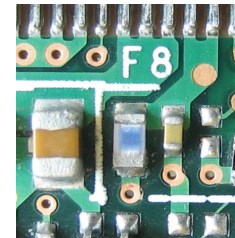
F6
xx mA
Marked

Location Unknown

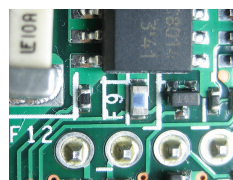
F7
2A
Marked 'N'



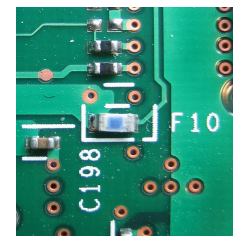
F8
500mA
Marked 'F'



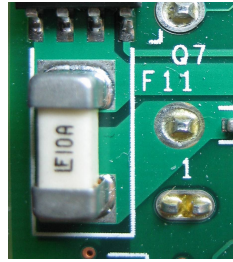
F9
500mA
Marked 'F'



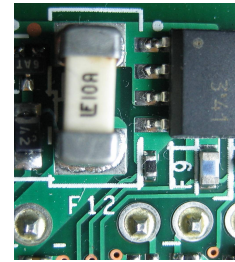
F10
500mA
Marked 'F'



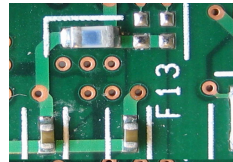
F11
10A
Marked 'LF10A'



F12
10A
Marked 'LF10A'



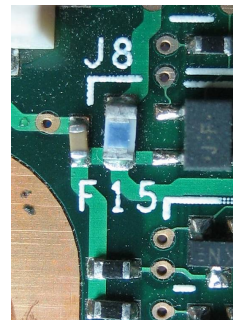
F13
xx mA
Marked



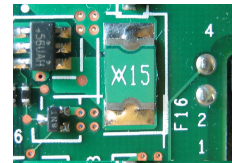
F14
xx mA
Marked

Location unknown

F15
500mA
Marked F



F16
xx mA
Marked X15

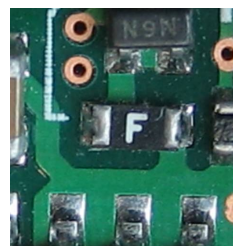


F17
xx mA
Marked X15
and 1516



Other Fuses with no Nomenclatures

F??a
500mA
Marked 'F'



Fuse Number	Marked Value	Amps	Purpose	Manufacturer Part No	Purchase Part Numbers		
					RS	Farnell / Newark	Mouser
F1	X15		5V	Similar to ¹ Bourns MF-MSMF Series			
F2	FU	7A	DC In Main Fuse 16V	Littlefuse 429 Series	N/A	9921923	576-0429007.WR ML
F3	N	2A	LCD 3.3V	Schurter USF 0603 Series	131-555		693-3412.0119.22₃
F3 Alt	P	3A	LCD 3.3V	Schurter USF 0603 Series	131-533		693-3413.0121.22₃
F4	F	0.5A	5V	Schurter USF 0603 Series	131-577		693-3413.0113.22₃
F5							
F6							
F7	N	2A	LCD System DC	Schurter USF 0603 Series	131-555		693-3412.0119.22₃
F8	F	0.5A	LCD 3.3V	Schurter USF 0603 Series	131-577		693-3413.0113.22₃
F9	F	0.5A	Main Battery 10.8V	Schurter USF 0603 Series	131-577		693-3413.0113.22₃
F10	F	0.5A	2 nd Battery 10.8V	Schurter USF 0603 Series	131-577		693-3413.0113.22₃
F11	LF10A	10A	2 nd Battery 10.8V	Littlefuse 451 453 Series ²	541-3467	9922202	576-0154010.DR
F12	LF10A	10A	Main Battery 10.8V	Littlefuse 451 453 Series ²	541-3467	9922202	576-0154010.DR
F13	No Mark						
F14							
F15	F	0.5A	Mousepad 5V	Schurter USF 0603 Series	131-577		693-3413.0113.22₃
F16	X15		USB Power 5V	Similar to ¹ Bourns MF-MSMF Series			
F17	X15		CDC Card 3.3V	Similar to ¹ Bourns MF-MSMF Series			
F17 alt	1516		CDC Card 3.3V	Similar to ¹ Bourns MF-MSMF Series			
F??a	F	0.5A	16V	Schurter USF 0603 Series	131-577		693-3413.0113.22₃

Notes

1. Appears to be resettable fuse type.
2. Differences are with cap plating - 451 series gold, 453 series silver; either can be used. RS Part number is for 451 series and states brass with tin plating.
3. Mouser Part numbers final two digits represent reel sizes; other options .24 and .26.